

IBM **Watson**

Watson 202

IBM



Watson 202

What we're doing

- 30 Minutes: What is Watson
- 10 Minutes: What can you do with Watson?
- 1 Hour: Build!
- 10 Minutes: Feedback

Who are we?



Max Kaufmann



Niyati
Parameswaran



Andrew Ayres

Introduce yourselves!

- Name?
- Who you work for?
- Why you care about Watson?





What is Watson?

28 APIs in 4 categories

Language

 AlchemyLanguage Learn more Documents	 Concept Expansion Learn more Documents	 Concept Insights Learn more Documents
 Dialog Learn more Documents	 Document Conversion Learn more Documents	 Language Translation Learn more Documents
 Natural Language Classifier Learn more Documents	 Personality Insights Learn more Documents	 Relationship Extraction Learn more Documents


Speech

 Speech to Text Learn more Documents	 Text to Speech Learn more Documents
 AlchemyData News Learn more Documents	 Tradeoff Analytics Learn more Documents

Analytics

 AlchemyVision Learn more Documents	 Visual Insights Learn more Documents
--	--

Vision

 Visual Recognition Learn more Documents

Why do I care about cognitive services?



These companies made lots of money by understanding language

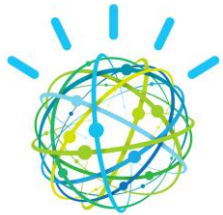
Watson Developer Cloud

<https://www.ibm.com/smarterplanet/us/en/ibmwatson/developercloud/>

**Now that I'm a Watson Expert, what
can I do?**

You could build your own Intelligent Personal Assistant

Watson



Siri



Speak to it



Google Now

General Commands



- "Search for [chicken recipes]?"
- "Say [how are you] in [Spanish]?"
- "What is [Schrodinger's cat]?"
- "Who invented [the internet]?"
- "What is the meaning of [life]?"

amazon echo



Luka talks to you about restaurants in natural language

Intelligent Personal Assistant

- What: <http://ipa-demo-anthony.mybluemix.net/>



Virtual Personal Assistant

Demo using IBM Watson Dialog + NLC Services

Hello, how can I help you?
Would you like to schedule a meeting, write an email or send an SMS?

Information

Dialog name: demo_ipa3

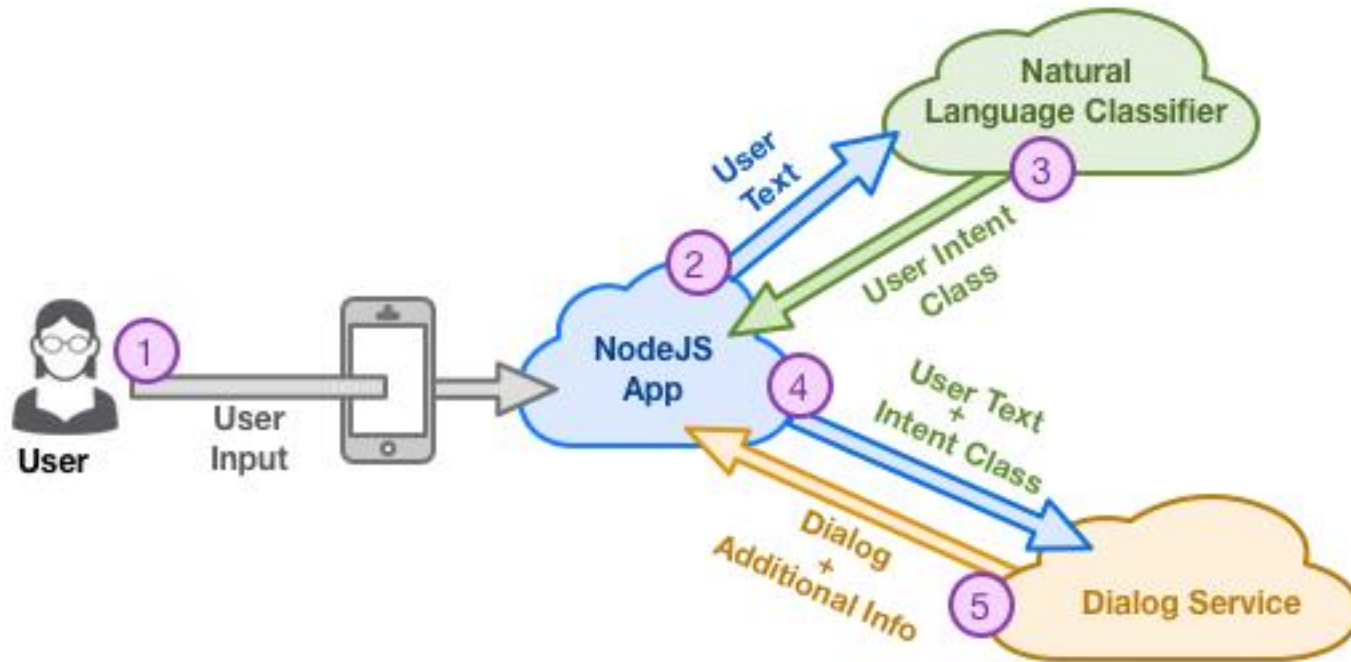
Dialog id: 0c5fe7f2-89dc-48ce-af5b-959be35c2f09

Conversation id: 323030

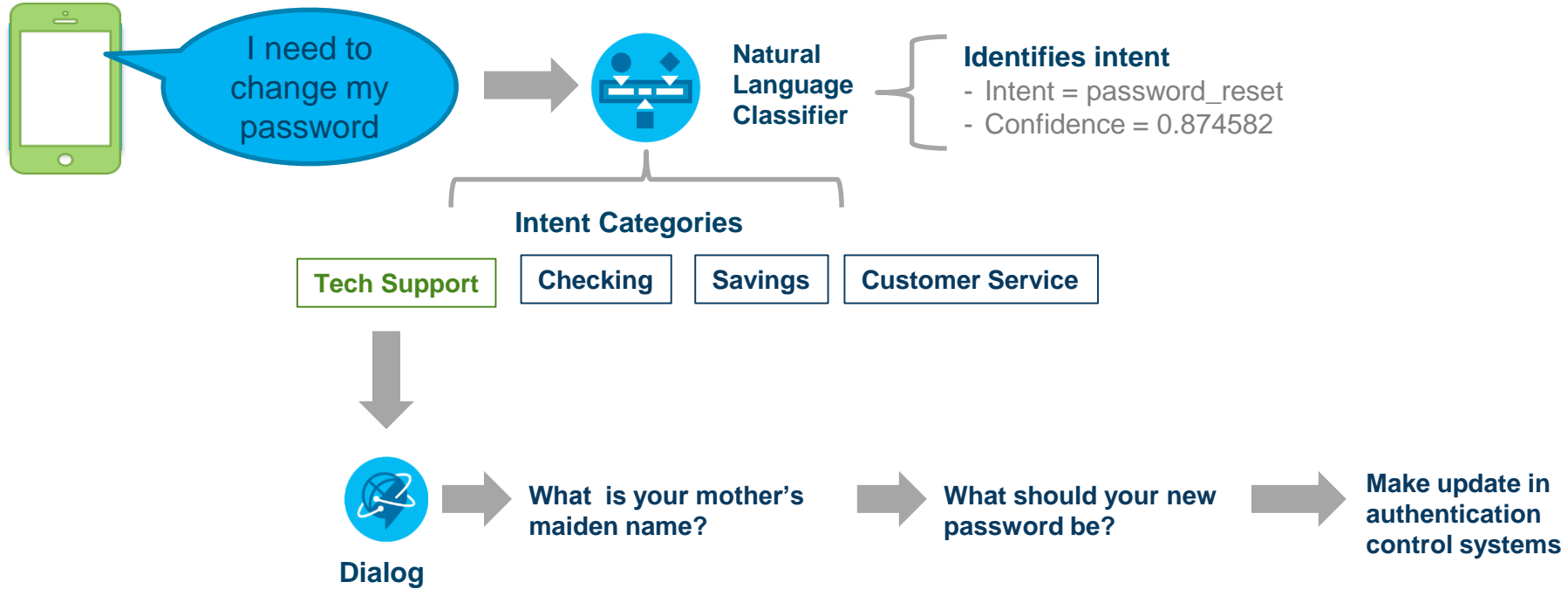
Client id: 324193

Profile

How does it work?



NLC: Banking Example



What about the other Watson services?

- Check out the demos for each individual service.
 - Most of them are on Github
- Check out our Application Starter Kits
 - <https://www.ibm.com/smarterplanet/us/en/ibmwatson/developercloud/application-starter-kits.html>
- Check out our App Gallery
 - <https://www.ibm.com/smarterplanet/us/en/ibmwatson/developercloud/gallery.html>

Let's get building!

Option 1: Intelligent Personal Assistant

- <https://www.github.com/biosopher/watson-ipa-web-nodejs>
- Get a VM (<https://nvlabs.qwiklab.com/live> -> IBM Watson Hands-on Lab)

Option 2: Explore the Watson Developer Cloud

- <https://www.ibm.com/smarterplanet/us/en/ibmwatson/developercloud/services-catalog.html>

Option 3: Check out the Application Starter Kits

- <https://www.ibm.com/smarterplanet/us/en/ibmwatson/developercloud/application-starter-kits.html>

Option 4: Check out the App Gallery

- <https://www.ibm.com/smarterplanet/us/en/ibmwatson/developercloud/gallery.html>

Wrap up + Discussion

- What did you learn?
- What did you like/dislike?
- Questions?